

SY215C-9LC SPARC



SANY

NEW
SPARC SERIES
EXCAVATOR
TO ACCELERATE USER
PROFITABILITY



Photos may include optional items also

**DYNAMIC OPTIMIZATION
MATCHING CONTROL
SYSTEM**

Operating weight- 21400Kg

Engine Power- 140HP (104kW) / 2000rpm

Bucket Capacity- 1.1m³ GP/0.95m³ HD/1.5m³ Sand/1.6m³ coal

SPECIFICATIONS

SY215C-9LC SPARC

ENGINE

Model	Cummins 6BT5.9-C140
Type	6 Cylinder, Inline, Water Cooled
Rated Engine Power	140HP(104kW) @ 2000 rpm
Max. Torque	571 N.m @ 1300rpm
Battery	2 X 12 V
Displacement	5.88L

CONTROL SYSTEM

Control System	DOMCS Intelligent Controller
Working Modes	H S L B
Remote Monitoring System	GPRS, GPS, GIS

HYDRAULIC SYSTEM

Main Pumps	2 Variable Displacement Axial Piston Pumps
Max. Flow	2 X 220 lpm
Pilot Pump	1 Gear Pump
Travel Motor	2 Axial Piston Motor with Parking Brake
Swing Motor	1 Axial Piston Motor with Swing Holding Brake

RELIEF VALVE SETTINGS

Implement Circuit	34.3 Mpa
Swing Circuit	25.5 Mpa
Travel Circuit	34.3 Mpa
Pilot Circuit	3.9 Mpa

UNDERCARRIAGE & WORKING DEVICE

Track Shoes (Each Side)	47
Upper Roller (Each Side)	2
Lower Roller (Each Side)	8
Track Guard (Each Side)	1
Std. Track	600 mm (12mm HD Track shoe)
Std. Boom	5700 mm
Std. Arm	2400 mm
Std. Bucket	1.1 m ³

PERFORMANCE

Max. Travel Speed(High/Low)	5.4/3.3 km/h
Swing Speed	11 rpm
Grade ability	70% / 35°
Ground Pressure	47 kPa
Max. Tracking Force	209 kN
Bucket Digging Force	138 kN
Arm Digging Force	129 kN

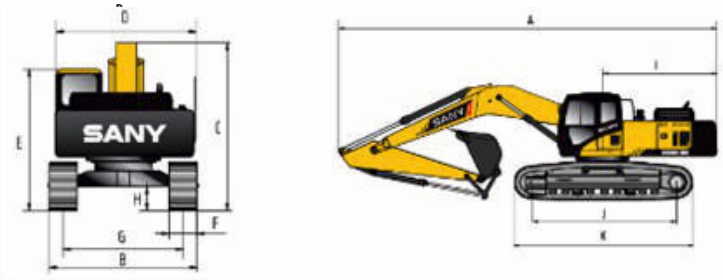
SERVICE REFILL CAPACITIES

Hydraulic Tank	230 L (Tank)	180 (Refill)
Fuel Tank	340 L	
Engine Oil	22.75 L	
Radiator	25.2 L	
Swing Device	4 L	
Travel Device	2x5.5 L	

CAB

AC	Std.
Cabin Guard	Opt.

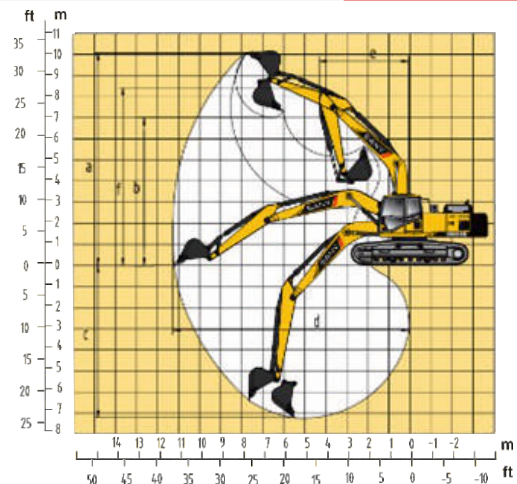
DIMENSION (Unit: mm)



DIMENSION (Unit: mm)

	Arm 2400	Arm 2900
A. Overall Length	9395	9430
B. Overall Width	2980	2980
C. Overall Height	2955	2955
D. Upper Width	2840	2840
E. Overall Height of Cab	2930	2930
F. Std. Track Shoe Width	600	600
G. Track Gauge	2380	2380
H. Min. Ground Clearance	465	465
I. Rear-end Swing Radius	2720	2720
J. Distance between Tumbles	3445	3445
K. Under Carriage Length	4250	4250

WORKING RANGE (Unit: mm)



WORKING RANGE

	Arm 2400	Arm 2900
a. Max. Cutting Height	9113	9600
b. Max. Dumping Height	6252	6730
c. Max. Digging Depth	6037	6600
d. Max. Digging Reach	9312	10280
e. Min. Swing Radius	3730	3730
f. Max. Height at Min. Swing Radius	7680	7680

BUCKET

Capacity	Width (mm)	Weight (kg)	Tooth Point	Arm Length	
				2.4	2.9
1.1 m ³ GP-Std.	1316	780	5	✓	✓
0.95 m ³ HD-Opt.	1176	870	4	✓	✓
1.5m ³ SAND-Opt.	1600	758	-	✓	✓
1.6m ³ COAL-Opt.	1740	900	-	✓	✓

SANY HEAVY INDUSTRY INDIA PVT. LTD.

HEAD OFFICE

Address : Plot No. E-4, Chakan Industrial Area, Phase-III, Village Kuruli, Taluka Khed, District Pune - 410501, Maharashtra, INDIA.

E-mail : customer-care@sanygroup.com

Website : www.sany.in

Toll Free No.: 1800-209-3337

Material & specifications are subject to change without prior notice in accordance with our continuous technical innovations. Featured machines in photos may include additional equipment.

