

SK210HD SK210HD_{LC} Super X

STANDARD EQUIPMENT

ENGINE

Engine, HINO J05E, Diesel engine with turbocharger and intercooler
Automatic engine deceleration
Auto Idle Stop (AIS)
Batteries (2 x 12V - 120Ah)
Starting motor (24V - 5 kW), 50 amp alternator
Removable clean-out screen for radiator
Automatic engine shut-down for low engine oil pressure
Engine oil pan drain valve
Double element air cleaner
Pre-air cleaner

CONTROL

Working mode selector (H-mode and S-mode)
Power Boost

SWING SYSTEM & TRAVEL SYSTEM

Swing rebound prevention system
Straight propel system
Two-speed travel with automatic shift down
Sealed & lubricated track links
Grease-type track adjusters
Automatic swing brake

HYDRAULIC

Arm regeneration system
Aluminum hydraulic oil cooler

MIRRORS & LIGHTS

Two rearview mirrors
Four front working lights

CAB & CONTROL

Two control levers, pilot-operated
Tow eyes
Horn, electric
Integrated left-right slide-type control box
Cab, all-weather sound suppressed type
Ashtray
Cigarette lighter
Cab light (interior)
Coat hook
Luggage tray
Large cup holder
Detachable two-piece floor mat
Double slide seat
7-way adjustable suspension seat
Retractable seatbelt
Headrest
Handrails
Heater and defroster
Intermittent windshield wiper with double-spray washer
Skylight
Tinted safety glass
Pull-up type front window and removable lower front window
Easy-to-read multi-display monitor
Automatic air conditioner
Emergency escape hammer

OPTIONAL EQUIPMENT

Radio, AM/FM Stereo with speakers
Wide range of buckets
Various optional arms
Front-guard protective structures
Piping for additional attachment

Note: Standard and optional equipment may vary. Consult your KOBELCO dealer for specifics.

KOBELCO

ACERA GEOSPEC SUPER X
SK210HD-8/SK210HDL-8

ACERA Hydraulic Excavators
GEOSPEC

Super X

SK210HD
SK210HD_{LC}

Bucket Capacity:

0.8 – 1.2 m³ ISO heaped

Engine Power:

158 HP (118 kW)/2,000 min⁻¹ (ISO 14396)

Operating Weight:

21,200 kg – SK210HD

21,600 kg – SK210HDL

Note: This catalog may contain attachments and optional equipment that are not available in your area. And it may contain photographs of machines with specifications that differ from those of machines sold in your areas. Please consult your nearest KOBELCO distributor for those items you require. Due to our policy of continuous product improvements all designs and specifications are subject to change without advance notice. Copyright by **KOBELCO CONSTRUCTION MACHINERY CO., LTD.** No part of this catalog may be reproduced in any manner without notice.

KOBELCO CONSTRUCTION EQUIPMENT INDIA PVT. LTD.

H-200, Sector-63, Noida, Distt: G.B. Nagar, U.P. - 201 307, INDIA
Tel : +91-120-4079900 Fax : +91-120-4079999
www.kobelconet.in/

Inquiries To:

Announcing ACERA GEOSPEC and the Concept of Beautiful Performance.

The Power Wave of Change

When we set out to design our new hydraulic excavators, we kept our eyes on the big picture.

Of course we wanted machines with greater digging capacity.

But they also had to be fuel-efficient and economical, while imposing less of a burden on the local and global environments.

Applying our advanced technologies,

we developed KOBELCO's new ACERA GEOSPEC series, an entirely new kind of excavator that beautifully balances all the demands of today's construction industry.

Lean and efficient with capacity to spare,

these sleek powerhouses bring a whole new style to the worksite while setting new standards for environmental responsibility.

Sturdy Construction & Built-in Durability ▶

Efficient Performance ▶

Easy Maintenance ▶

Comfort and Safety ▶



Pursuing the "Three E's"

The Perfection of Next-Generation, Network Performance

Enhancement

Greater Performance Capacity

- New hydraulic circuitry minimizes pressure loss
- High-efficiency, electronically controlled Common Rail Fuel Injection Engine
- Powerful travel and arm/bucket digging force
 - Sturdy Construction
- GEOSCAN Remote Monitoring System

Economy

Improved Cost Efficiency

- Advanced power plant that reduces fuel consumption
- Easy maintenance that reduces upkeep costs
- High structural durability and reliability that retain machine value longer

Environment

Features That Go Easy on the Earth

- Meets the latest exhaust emission standards
 - Auto Idle Stop as standard equipment
- Noise reduction measures (with improvement of the sound quality) minimize noise and vibration



ACERA
GEOSPEC ACERA GEOSPEC

The "GEO" in GEOSPEC expresses our deep respect for our planet, and for the solid ground where excavators are in their element. This is accompanied by SPEC, which refers to the performance specifications needed to get the job done efficiently as we carry on the tradition of the urban-friendly ACERA series.

Sturdy Construction & Built-in Durability

Stable Attachment Strength

Forged and cast components are used throughout. The arm tip's cross-sectional coefficient is 15 % higher than previous models, giving the arm the same strength as the 3-faced reinforced arm that was offered only as an option before. The strength of the boom foot has also been increased by 18 %.

Enhanced Upper Frame Strength

The structure of the lower portion of the upper frame has been reassessed and the undercover area has been minimized. Also, the side deck's cross-sectional strength has been boosted by 50 %.

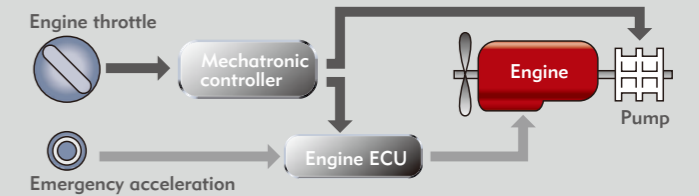
Durability That Retains Machine Value Five and Ten Years in the Future

- New operator's seat covered in durable material
- High-quality urethane paint
- Easily repaired bolted hand rails

Emergency Acceleration (Dial) Permits Continued Operation in the Unlikely Event of Malfunction



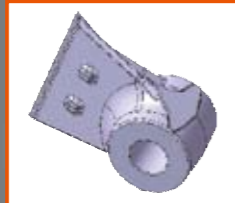
If unexpected trouble is experienced with the ITCS mechatronic control system, the machine can still be operated using the emergency acceleration system. Digging modes are also automatically relayed to an emergency system so that digging can continue temporarily until a service person arrives to repair the primary system.



Reinforced boom support section



Cast steel boom foot boss



Pre-air cleaner



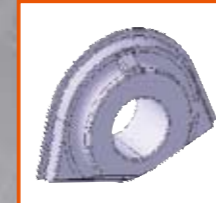
Reinforced boom side panels



Integrated cast steel boom top



Forged steel arm foot boss



Larger size bucket up to 1.2 m³

Track Guides Installed in Three Places

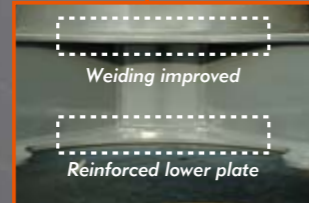
Track guides installed in three places improve travel stability and help prevent the crawlers from coming off the rollers.



Stronger casing for travel motor

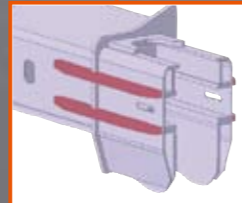


Reinforced lowercarriage



Welding improved

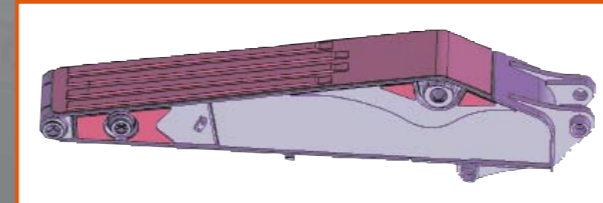
Reinforced lower plate



Extra heavy-duty idler cover



Durable cast steel shoe



Reinforced arm

Newly designed MCU



New MCU Conventional MCU

- Vertical alignment and sealed cover gives better protection from water and dust
- Integration in base plate boosts assembly quality
- Reliable fixture to base plate



Countermeasures Against Electrical System Failure

All elements of the electrical system, including controller, have been designed for enhanced reliability.




Efficient Performance



Amazing Productivity with 20% Saving in Fuel Consumption and Top-Class Cost Performance

	Fuel Consumption* 20% improvement in fuel efficiency when performing more work volume (S-Mode)
	Work Volume* 8% increase in work volume using the same amount of fuel. (H-Mode)

"Top-Class" Powerful Digging

Max. arm crowding force:	121 kN (2.4m arm)	
Max. arm crowding force with power boost:	133 kN (2.4m arm)	
Max. bucket digging force:	143 kN (1.05m ³ bucket)	
Max. bucket digging force with power boost:	157 kN (1.05m ³ bucket)	

Powerful Travel


Travel torque: increased by	16%	
Drawbar pulling force:	229 kN	

Greater Swing Power, Shorter Cycle Times

Swing torque: increased by	10%	
Swing speed:	12.5mm⁻¹	

Significant Extension of Continuous Working Hours

The combination of a large-capacity fuel tank and excellent fuel efficiency delivers an impressive 30% increase in continuous operation hours. One tank of fuel keeps the machine operating under high-load conditions for more than 20 hours.**

Fuel tank:	30%	
------------	------------	---

Light Lever Operation

It takes 10% less effort to move the control levers, so that operators can work longer hours with less fatigue.

	10%Less
---	----------------

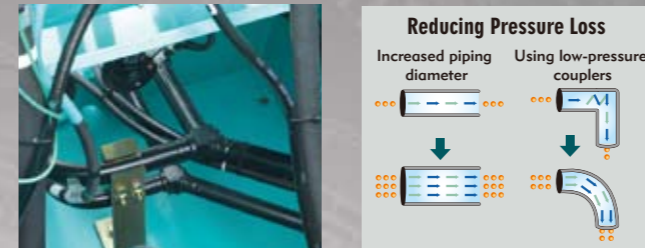
*The value shows results from actual measurements taken by KOBELCO when compared with previous KOBELCO models.
**The value shows results from actual measurements taken by KOBELCO for continuous operation in S Mode, compared with previous models. Results vary depending on the method of operation and load conditions.



NEXT-3E Technology

New Hydraulic System

Rigorous inspections for pressure loss are performed on all components of the hydraulic piping, from the spool of the control valve to the connectors. This regimen, combined with the use of a new, high-efficiency pump, cuts energy loss to a minimum.



NEXT-3E Technology

Next-Generation Electronic Engine Control

The high-pressure, common-rail fuel-injection engine features a cooled EGR (Exhaust Gas Recirculation) device that lowers the air intake temperature to keep the oxygen concentration down.



NEXT-3E Technology

Total Tuning Through Advanced ITCS Control

The next-generation engine control is governed by a new version of ITCS, which responds quickly to sudden changes in hydraulic load to ensure that the engine runs as efficiently as possible with a minimum of wasted output.

ITCS (Intelligent Total Control System) is an advanced, computerized system that provides comprehensive control of all machine functions.

Simple Select: Two Digging Modes

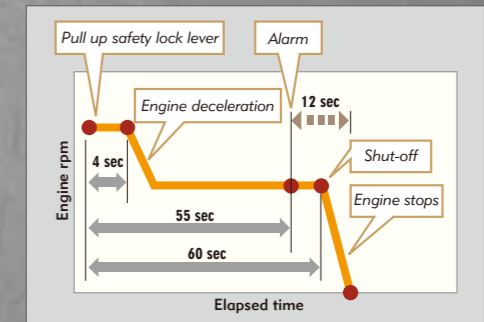
H Mode	For heavy duty when a higher performance level is required.
S Mode	For normal operations with lower fuel consumption.

Breaker Mode (Optional)

Hydraulic piping for breaker mode is available as option. The operator easily selects the mode from inside cab.



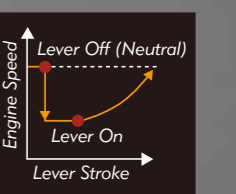
Auto Idle Stop Provided as Standard Equipment



This function saves fuel and cuts emissions by shutting down the engine automatically when the safety lock lever is pulled up. It also stops the hourmeter, which helps to retain the machine's asset value.

Automatic Acceleration/Deceleration Function Reduces Engine Speed

Engine speed is automatically reduced when the control lever is placed in neutral, effectively saving fuel and reducing noise and exhaust emissions. The engine proportionally comes to desire speed when the lever is moved out of neutral.



Easy Maintenance

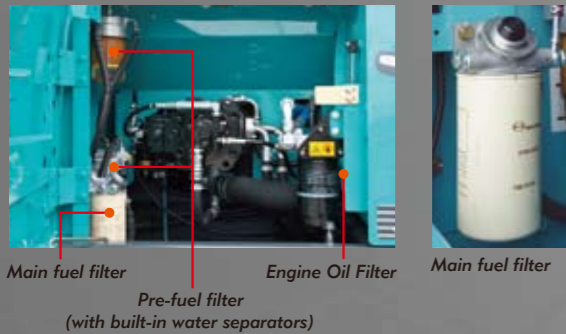
Comfortable "On the Ground" Maintenance



The machine layout was designed with easy inspection and maintenance in mind.

Access through the right side cover ▶▶▶▶▶▶▶▶

A new fuel filter has been installed in a convenient, readily accessible location. It now has two pre-fuel filters (with built-in water separators), and a high-efficiency main fuel filter.



Quick Oil Drain Valves for Quick Maintenance



A quick drain valve, which requires no tools, is provided as standard equipment.

Quick drain valve



To facilitate fuel tank cleaning, the fuel drain valve was made larger and fitted with a flange on the bottom.

Fuel drain valve

More Efficient Maintenance



Detachable two-piece floor mat with handles for easy removal.



Easy-access fuse box.



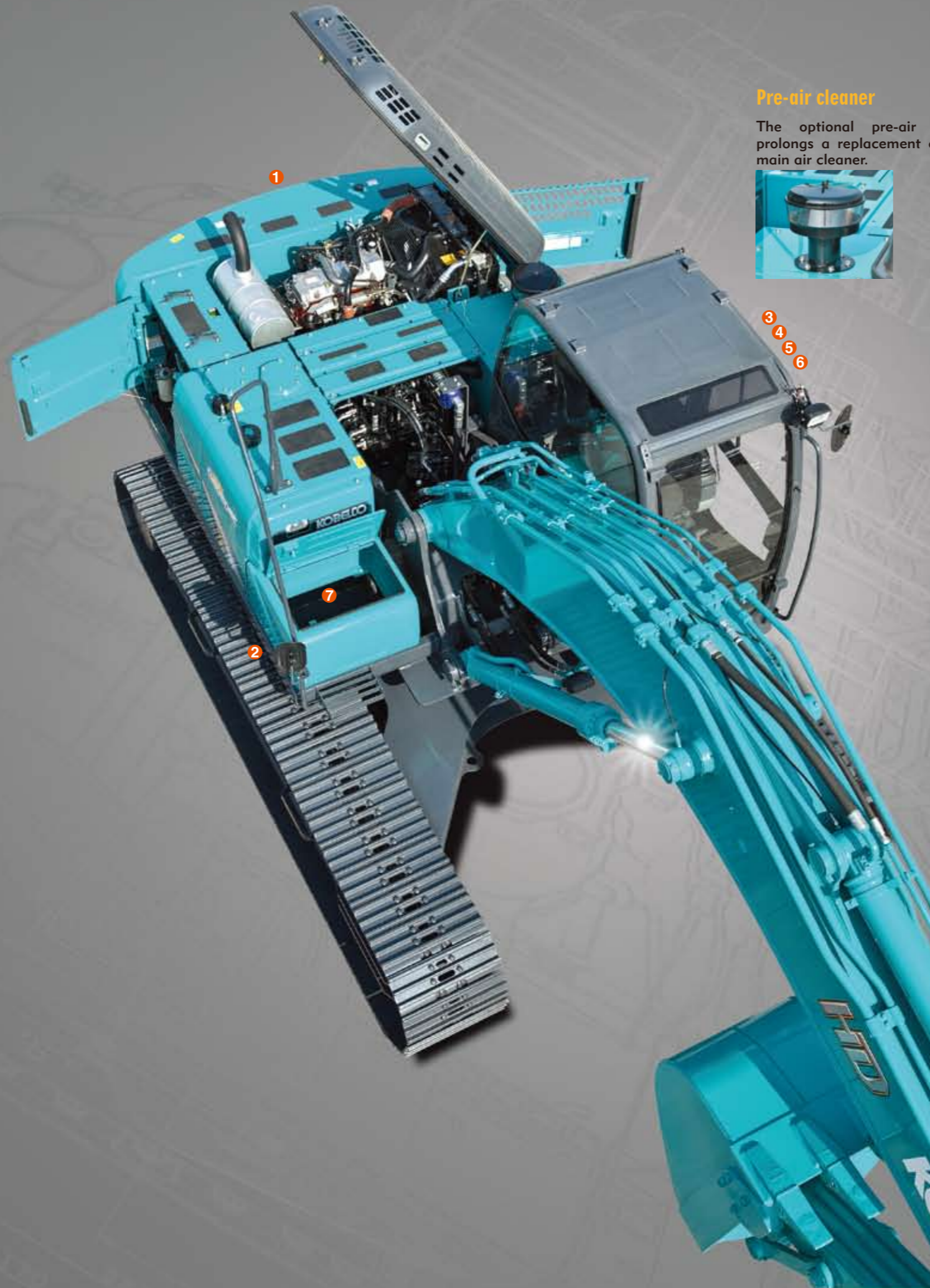
Air conditioner filter can be easily removed.



Hour meter can be checked while standing on the ground.



Large-capacity tool box.



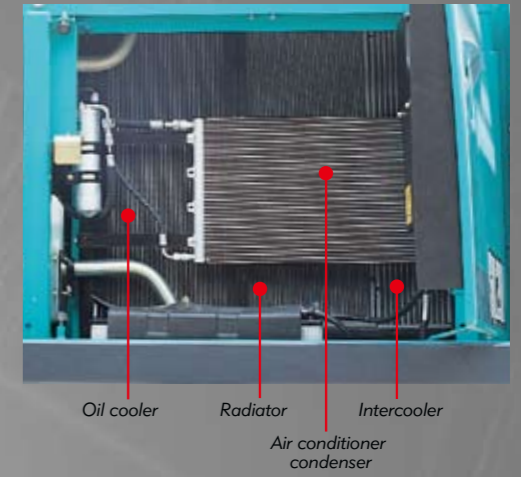
Pre-air cleaner

The optional pre-air cleaner prolongs a replacement cycle of main air cleaner.



◀◀◀◀◀◀ Access through the left side cover

Parallel Cooling Units Are Easy to Clean



Highly Durable Super-fine Filter

The high-capacity hydraulic oil filter incorporates glass fiber with superior cleaning power and durability. With a replacement cycle of 1,000 hours and a construction that allows replacement of the filter element only, it's both highly effective and highly economical.



Super-fine filter

Double-Element Air Cleaner as Standard

The large-capacity element features a double-filter structure that keeps the engine running clean even in dusty environments.



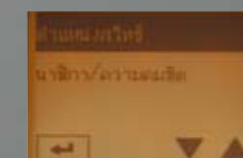
Air cleaner (double element)

Monitor Display with Essential Information for Accurate Maintenance Checks



- Displays only the maintenance information that's needed, when it's needed.
- Self-diagnostic function that provides early-warning detection and display of electrical system malfunctions.
- Record previous breakdowns, including irregular and transient malfunctions.

Choice of 16 Languages for Monitor Display



With messages including those requiring urgent action displayed in the local language, users in all parts of the world can work with greater peace of mind.

Comfort and Safety

Spacious, Comfortable Cab

Designed for safety, the cab meets ISO standards, and also offers a spacious interior and plenty of foot room, with levers and other controls ideally positioned for easy operation.

- A long wiper covers a wide area for a broad view in bad weather.
- Back mirrors provide a safe view of the rear.
- Reinforced green glass windows meet European standards.

Wide-Access Cab Ensures Smooth Entry and Exit



The left control box lifts up with the safety lock lever to add 10° to the cab entry angle for easy entrance and exit.



Plenty of Foot Room

The rigid cab construction and liquid-filled viscous cab mounts minimize cab vibration. In addition, the use of new lower rollers on the crawlers cuts travel vibration in half compared with previous models.

In-Cab Noise is Reduced by 3dB Compared with Previous Models.

Newly Designed Information Display Prioritizes Visual Recognition



The analog gauge provides information that's easy to read regardless of the operating environment. The information display screen has been enlarged, and a visor is attached to further enhance visibility.

Suspension Seat



Comfortable suspension seat that reduces operator fatigue fitted as standard.



Creating a Comfortable Operating Environment



Seat can be reclined to horizontal position



Double slide seat



Powerful automatic air conditioner



Spacious luggage tray



One-touch lock release simplifies opening and closing the front window



Large cup holder

- Two-speaker FM radio with station select (Optional)
- New interior design and materials create an elegant feel

Low Noise Level and Mild Sound Quality

The electronically controlled common-rail engine has a unique fuel injection system that runs quietly.

Meets EMC (Electromagnetic Compatibility) Standards in Europe.

Measures have been taken to ensure that the GEOSPEC machines do not cause electro-magnetic interference.

Bracket for Attaching a Head Guard Provided as Standard Equipment

A bracket is provided as standard equipment that allows the optional head guard to be simply bolted on.

Automatic Engine Shut-Down for Low Engine Oil pressure

Safety Features That Take Various Scenarios into Consideration



Firewall separates the pump compartment from the engine



Hammer for emergency exit

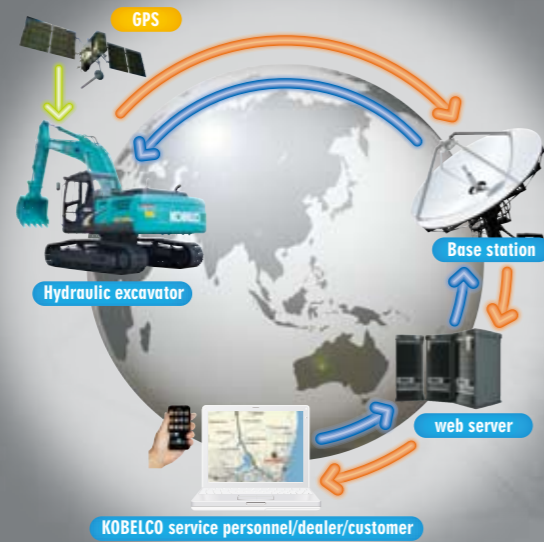


Reflector

- Thermal guard prevents contact with hot components during engine inspections
- Hand rails meet European standards
- Retractable seatbelt requires no manual adjustment



Remote Monitoring for Peace of Mind



GEOSCAN is the remote monitoring system for Acera Geospec series excavators. When a hydraulic excavator is fitted with this system, data on the machine's operation, such as operating hours, location, fuel consumption, and maintenance status can be obtained remotely.

Direct Access to Operational Status

Location Data

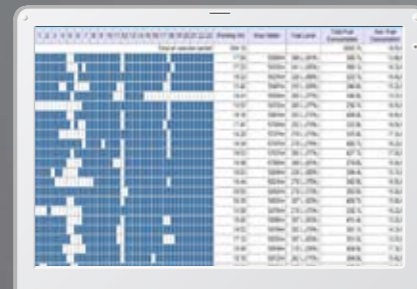
Accurate location data can be obtained even from sites where communications are difficult.



Latest location

Fuel Consumption Data

Data on fuel consumption and idling times can be used to indicate improvements in fuel consumption.



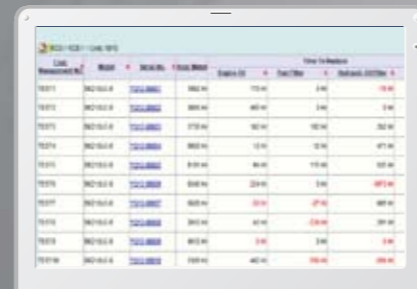
Fuel consumption

Maintenance Data and Warning Alerts

Machine Maintenance Data

Provides maintenance status of separate machines operating at multiple sites.

Maintenance data is also relayed to KOBELCO service personnel, for more efficient planning of periodic servicing.



Maintenance

Operating Hours

A comparison of operating times of machines at multiple locations shows which locations are busier and more profitable.

Operating hours on site can be accurately recorded, for running time calculations needed for rental machines, etc.



Daily report

Graph of Work Content

The graph shows how working hours are divided among different operating categories, including digging, idling, traveling and optional operations (N&B).



Work status

Security System

Engine Start Alarm

The system can be set an alarm if the machine is operated outside designated time.

Area Alarm

It can be set an alarm if the machine is moved out of its designated area to another location.



Alarm for outside of reset area

Engine

Model	HINO J05E
Type:	Direct injection, water-cooled, 4-cycle diesel engine with turbocharger, intercooler (Complies with EU (NRMM) Stage IIIA, US EPA Tier III, and Act on Regulation, Etc. of Emissions from Non-road Special Motor Vehicles (Japan))
No. of cylinders:	4
Bore and stroke:	112 mm X 130 mm
Displacement:	5.123 L
Rated power output	158 HP (118 kW)/2,000 min ⁻¹ (ISO 14396)
Max. torque	592 N·m/1,600 min ⁻¹ (ISO 14396)

Hydraulic System

Pump	
Type:	Two variable displacement pumps + one gear pump
Max. discharge flow:	2 X 220 L/min, 1 X 20 L/min
Relief valve setting	
Boom, arm and bucket:	34.3 MPa {350 kgf/cm ² }
Power Boost:	37.8 MPa {385 kgf/cm ² }
Travel circuit:	34.3 MPa {350 kgf/cm ² }
Swing circuit:	29.0 MPa {296 kgf/cm ² }
Control circuit:	5.0 MPa {50 kgf/cm ² }
Pilot control pump:	Gear type
Main control valves:	8-spool
Oil cooler:	Air cooled type

Swing System

Swing motor:	Axial-piston motor
Brake:	Hydraulic; locking automatically when the swing control lever is in the neutral position
Parking brake:	Hydraulic disc brake
Swing speed:	12.5 min ⁻¹ (rpm)
Tail swing radius:	2,860 mm
Min. front swing radius:	3,560 mm

Attachments

Application	Working Condition	Bucket Capacity (m ³)	Width (with side cutter) (mm)	Width (with side cutter) (kg)	SK210HD		SK210HDL	
					2.4 m Arm	2.9 m Arm	2.4 m Arm	2.9 m Arm
General Digging	Sand, Gravel, Clay, Trenching and Loading & General Construction Job	0.93	1,360	870	○	□	○	□
		1.05	1,450	960	□	△	○	□
Light Duty Digging	Dry, Loose soil and Loading	1.05	1,450	960	□	△	○	□
		1.20	1,610	1,020	△	×	□	×
Rock	Blue Metal Quarry	0.80	1,160	730	○	×	○	×
		1.05	1,450	960	×	×	○	×
Heavy Duty	Granite / Marble Quarry	0.80	1,160	730	—	—	○	×
		1.05	1,450	960	—	—	○	×
Coal	Coal Re-Handling	1.20	1,610	1,020	△	△	□	△

○ : General purpose use, material weight up to 1.8t/m³
 □ : General purpose use, material weight up to 1.6t/m³
 △ : Light duty work, material weight up to 1.2t/m³
 × : Not usable

Travel System

Travel motors:	2 X axial-piston, two-step motors
Travel brakes:	Hydraulic disc brake
Parking brakes:	Oil disc brake per motor
Travel shoes	46 each side (SK210HD) 49 each side (SK210HDL)
Travel speed:	6.0/3.6 km/h
Drawbar pulling force:	229 kN {23.3 tf} (SAEJ 1309)
Gradeability:	70 % {35°}
Ground clearance:	430 mm

Cab & Control

Cab	
All-weather, sound-suppressed steel cab mounted on the silicon-sealed viscous mounts and equipped with a heavy, insulated floor mat.	
Control	
Two hand levers and two foot pedals for travel	
Two hand levers for excavating and swing	
Electric rotary-type engine throttle	

Boom, Arm & Bucket

Boom cylinders:	120 mm X 1,355 mm
Arm cylinder:	135 mm X 1,558 mm
Bucket cylinder:	120 mm X 1,080 mm

Refilling Capacities & Lubrications

Fuel tank:	370 L
Cooling system:	22 L
Engine oil:	22 L
Travel reduction gear:	2 X 5.3 L
Swing reduction gear:	3.0 L
Hydraulic oil tank:	146 L tank oil level
	230 L hydraulic system



Working Ranges

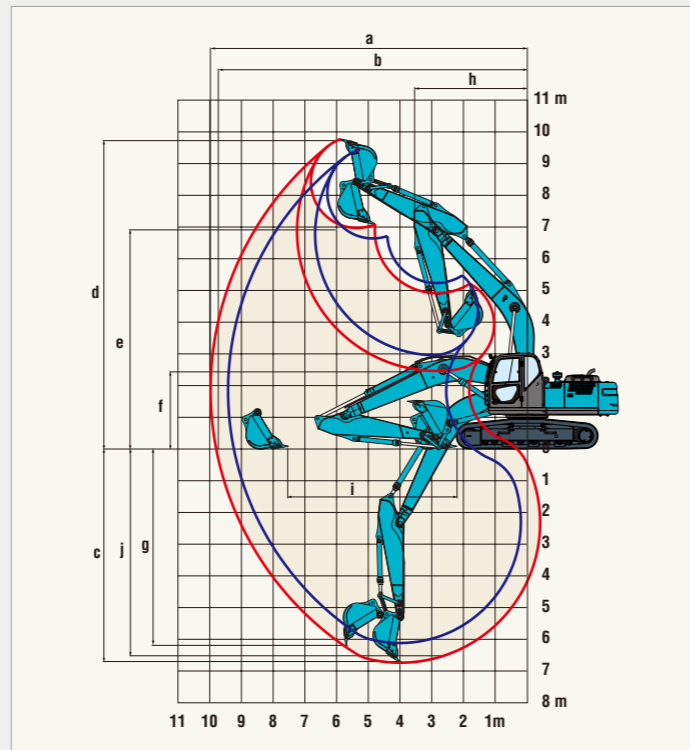
Range	Boom 5.65 m	
	Short 2.4 m	Standard 2.94 m
a - Max. digging reach	9.42	9.9
b - Max. digging reach at ground level	9.24	9.73
c - Max. digging depth	6.16	6.7
d - Max. digging height	9.51	9.72
e - Max. dumping clearance	6.68	6.91
f - Min. dumping clearance	2.98	2.43
g - Max. vertical wall digging depth	5.57	6.1
h - Min. swing radius	3.56	3.54
i - Horizontal digging stroke at ground level	4.08	5.27
j - Digging depth for 2.4 m (8') flat bottom	5.95	6.52
Bucket capacity ISO heaped m ³	1.05	0.93

Digging Force (ISO 6015)

Unit: kN (tf)

Arm length	Short 2.4 m	Standard 2.94 m
Bucket digging force	143 (14.6) 157 (16.0)*	143 (14.6) 157 (16.0)*
Arm crowding force	121 (12.3) 133 (13.6)*	102 (10.4) 112 (11.4)*

*Power Boost engaged.



— Short Arm
— Standard Arm

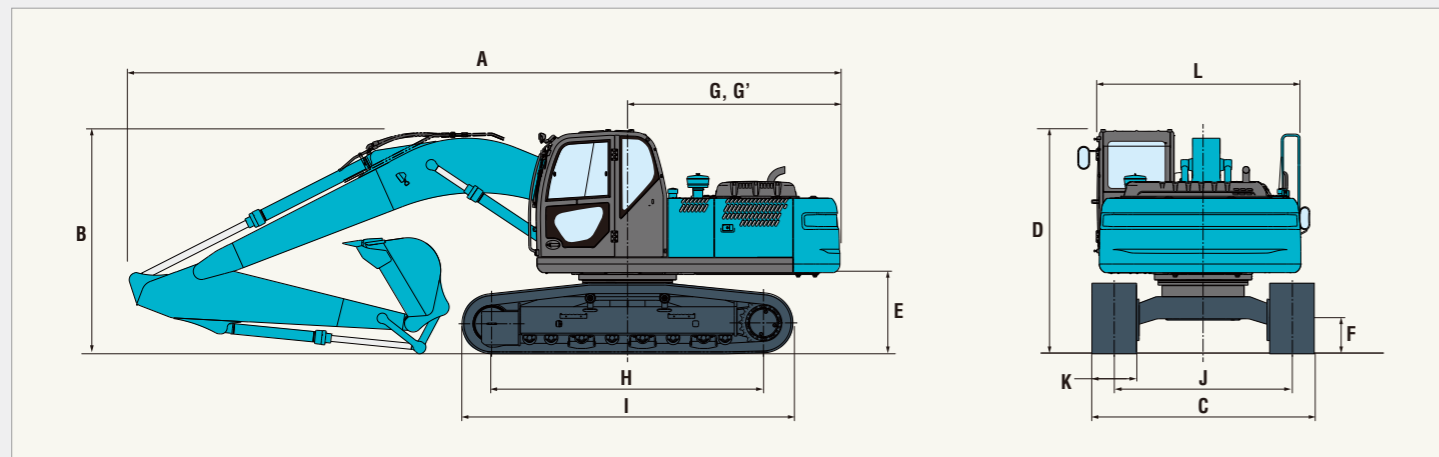


Dimensions

Arm length	Short 2.4 m	Standard 2.94 m
A Overall length	9,640	9,560
B Overall height (to top of boom)	3,160	2,980
C Overall width of crawler	SK210HD 2,800 SK210HDLG 2,990	
D Overall height (to top of cab)	3,030	
E Ground clearance of rear end*	1,060	
F Ground clearance*	430	
G Tail swing radius	2,860	

		Unit: mm
G' Distance from center of swing to rear end		2,860
H Tumbler distance	SK210HD 3,370 SK210HDLG 3,660	
I Overall length of crawler	SK210HD 4,170 SK210HDLG 4,450	
J Track gauge	SK210HD 2,200 SK210HDLG 2,390	
K Shoe width		600
L Overall width of upperstructure		2,710

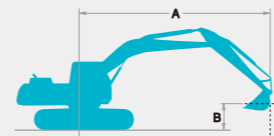
* Without including height of shoe lug.



Operating Weight & Ground Pressure

In standard trim, with standard boom, 2.4 m arm, and 1.05 m³ ISO heaped bucket

Shaped		Triple grouser shoes (even height)	
Shoe width	mm	600	
Overall width of crawler	SK210HD	2,800	
	SK210HDLG	2,990	
Ground pressure	SK210HD	47 (0.48) kPa (kgf/cm ²)	
	SK210HDLG	45 (0.46) kPa (kgf/cm ²)	
Operating weight	SK210HD	21,200 kg	
	SK210HDLG	21,600 kg	



Rating over front

Rating over side or 360 degrees

A - Reach from swing centerline to bucket hook
B - Bucket hook height above/below ground
C - Lifting capacities in kilograms
• Max. discharge pressure: 37.8 MPa (385 kg/cm²)

SK210HDLG		Short Arm: 2.4 m, Bucket: 1.05 m ³ ISO heaped 960 kg Shoe: 600 mm Counterweight: 4,480 kg (Power Boost)												
B	A	1.5 m		3.0 m		4.5 m		6.0 m		7.5 m		At Max. Reach		Radius
		7.5 m	kg											
6.0 m	kg							*5,450	4,720			*4,250	3,680	6.82 m
4.5 m	kg					*7,110	*7,110	*5,950	4,520	*4,560	2,970	*4,290	2,950	7.54 m
3.0 m	kg					*8,960	6,770	*6,770	4,240	4,620	2,860	4,200	2,580	7.91 m
1.5 m	kg					*10,530	6,200	6,500	3,960	4,480	2,730	4,030	2,450	7.99 m
G.L.	kg					*7,410	*7,410	10,300	5,930	6,300	3,780	4,380	2,640	7.77 m
-1.5 m	kg	*8,460	*8,460	*12,960	11,990	10,240	5,880	6,230	3,720			4,620	2,790	7.24 m
-3.0 m	kg	*13,750	*13,750	*13,320	12,250	*9,580	5,990	6,320	3,800			5,840	3,530	6.31 m
-4.5 m	kg			*9,270	*9,270	*6,650	6,310					*6,180	5,800	4.75 m

SK210HDLG		Short Arm: 2.4 m, Bucket: 1.2 m ³ ISO heaped 1,020 kg Shoe: 600 mm Counterweight: 4,480 kg (Power Boost)												
B	A	1.5 m		3.0 m		4.5 m		6.0 m		7.5 m		At Max. Reach		Radius
		7.5 m	kg											
6.0 m	kg							*5,400	4,680			*4,210	3,640	6.82 m
4.5 m	kg					*7,060	*7,060	*5,900	4,480	*4,520	2,930	*4,250	2,900	7.54 m
3.0 m	kg					*8,910	6,720	*6,720	4,190	4,580	2,820	4,160	2,540	7.91 m
1.5 m	kg					*10,470	6,150	6,460	3,920	4,440	2,690	3,980	2,400	7.99 m
G.L.	kg					*7,370	*7,370	10,240	5,870	6,250	3,740	4,340	2,600	7.77 m
-1.5 m	kg	*8,420	*8,420	*12,920	11,920	10,180	5,820	6,180	3,680			4,580	2,740	7.24 m
-3.0 m	kg	*13,710	*13,710	*13,250	12,190	*9,520	5,930	6,280	3,760			5,790	3,490	6.31 m
-4.5 m	kg			*9,210	*9,210	*6,590	6,260					*6,130	5,750	4.75 m

SK210HDLG		Standard Arm: 2.94 m, Bucket: 0.93 m ³ ISO heaped 870 kg Shoe: 600 mm Counterweight: 4,480 kg (Power Boost)												
B	A	1.5 m		3.0 m		4.5 m		6.0 m		7.5 m		At Max. Reach		Radius
		7.5 m	kg							*3,840	*3,840			
6.0 m	kg							*4,960	4,880			*2,890	*2,890	7.38 m
4.5 m	kg							*5,520	4,660	*4,800	3,080	*2,900	2,670	8.05 m
3.0 m	kg					*13,220	*13,220	*8,270	7,000	*6,400	4,360	4,710	2,940	8.40 m
1.5 m	kg					*7,080	*7,080	*10,070	6,370	6,600	4,050	4,540	2,790	8.47 m
G.L.	kg					*8,350	*8,350	10,380	6,000	6,350	3,830	4,410	2,670	8.27 m
-1.5 m	kg	*7,540	*7,540	*11,960	11,860	10,230	5,870	6,240	3,730	4,360	2,630	4,130	2,490	7.77 m
-3.0 m	kg	*11,510	*11,510	*14,660	12,070	*10,180	5,920	6,260	3,760			5,010	3,040	6.91 m
-4.5 m	kg			*11,240	*11,240	*7,990	6,150					*6,150	4,470	5.53 m

SK210HD		Short Arm: 2.4 m, Bucket: 1.05 m ³ ISO heaped 960 kg Shoe: 600 mm Counterweight: 4,480 kg (Power Boost)												
B	A	1.5 m		3.0 m		4.5 m		6.0 m		7.5 m		At Max. Reach		Radius
		7.5 m	kg											
6.0 m	kg							*5,450	4,260			*4,250	3,310	6.82 m
4.5 m	kg					*7,110	6,690	*5,950	4,070	4,180	2,650	4,140	2,630	7.54 m
3.0 m	kg					*8,960	6,050	5,980	3,790	4,060	2,540	3,680	2,290	7.91 m
1.5 m	kg					9,170	5,500	5,680	3,520	3,920	2,410	3,520	2,150	7.99 m
G.L.	kg					*7,410	*7,410	8,850	5,230	5,490	3,340	3,830	2,330	7.77 m
-1.5 m	kg	*8,460	*8,460	*12,960	10,400	8,790	5,180	5,420	3,290			4,040	2,460	7.24 m
-3.0 m	kg	*13,750	*13,750	*13,320	10,650	8,920	5,290	5,510	3,360			5,100	3,130	6.31 m
-4.5 m	kg			*9,270	*9,270	*6,650	5,600					*6,180	5,150	4.75 m

SK210HD		Standard Arm: 2.94 m, Bucket: 0.93 m ³ ISO heaped 870 kg Shoe: 600 mm Counterweight: 4,480 kg (Power Boost)												
B	A	1.5 m		3.0 m		4.5 m		6.0 m		7.5 m		At Max. Reach		Radius
		7.5 m	kg							*3,840	*3,840			
6.0 m	kg							*4,960	4,420			*2,890	*2,890	7.38 m
4.5 m	kg							*5,520	4,210	4,300	2,760	*2,900	2,380	8.05 m
3.0 m	kg					*13,220	12,120	*8,270	6,270	6,110	3,910	4,150	2,620	8.40 m
1.5 m	kg					*7,080	*7,080	9,350	5,660	5,780	3,610	3,980	2,470	8.47 m
G.L.	kg					*8,350	*8,350	8,930	5,300	5,540	3,390	3,860	2,350	8.27 m
-1.5 m	kg	*7,540	*7,540	*11,960	10,280	8,780	5,180	5,430	3,290	3,810	2,310	3,610	2,190	7.77 m
-3.0 m	kg	*11,510	*11,510	*14,660	10,480	8,840	5,230	5,450	3,320			4,380	2,680	6.91 m
-4.5 m	kg			*11,240	10,880	*7,990	5,450					*6,150	3,970	5.53 m

Notes:

- Do not attempt to lift or hold any load that is greater than these lift capacities at their specified lift point radius and heights. Weight of all accessories must be deducted from the above lift capacities.
- Lift capacities are based on machine standing on level, firm, and uniform ground. User must make allowance for job conditions such as soft or uneven ground, out of level conditions, side loads, sudden stopping of loads, hazardous conditions, experience of personnel, etc.
- Bucket lift hook defined as lift point.
- The above lifting capacities are in compliance with ISO 10567. They do not exceed

- 87% of hydraulic lifting capacity or 75% of tipping load. Lifting capacities marked with an asterisk (*) are limited by hydraulic capacity rather than tipping load.
- Operator should be fully acquainted with the Operator's and Maintenance Instructions before operating this machine. Rules for safe operation of equipment should be adhered to at all times.
- Lift capacities apply to only machine as originally manufactured and normally equipped by KOBELCO CONSTRUCTION MACHINERY CO., LTD.
- The above figures indicate machine capacity, but in practice the machine should not be used for lifting loads.