



Capable of working in a primary or secondary application



Featuring the proven, high performing Sandvik CS440 Hydrocone



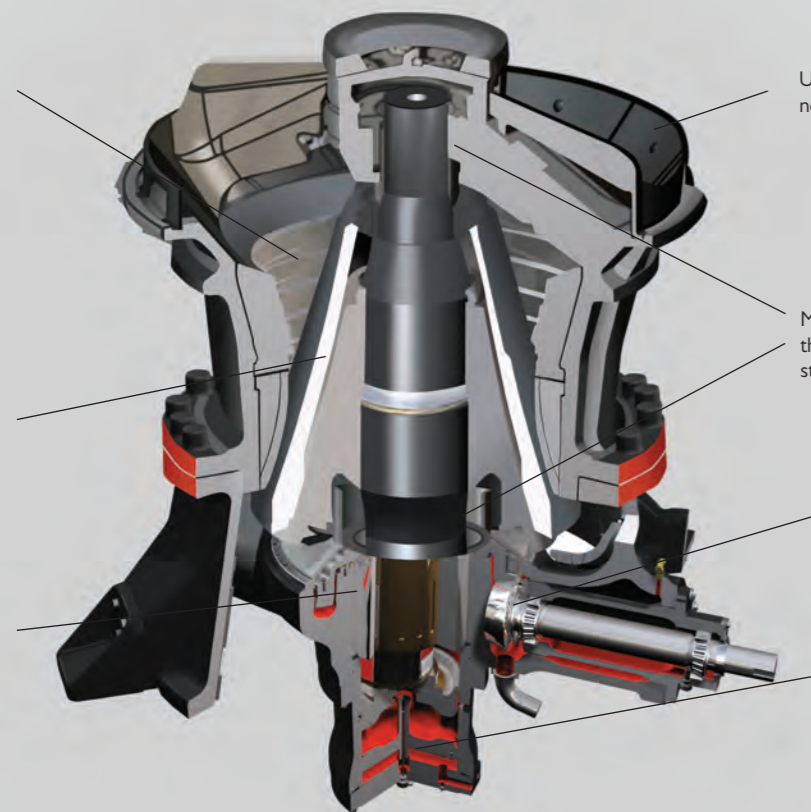
CLP Liners are designed to keep maximum feed size into the cone throughout the wear life of the liners. All liner options fit in one top shell.

Constant liner opening results in constant production performance throughout liner life.

Longer crushing chamber due to top & bottom support resulting in massive reductions in the chamber.

Bush arrangement has multiple settings to suit the required application.

Eccentric throw can be changed by simply turning the bush. The throw range is the most extensive in the market.



Unique crusher design eliminates the need for anti-spin device on head.

Main Shaft is supported from both the Top and Bottom giving additional strength.

Helical drive gear arrangement for maximum durability and smooth operation.

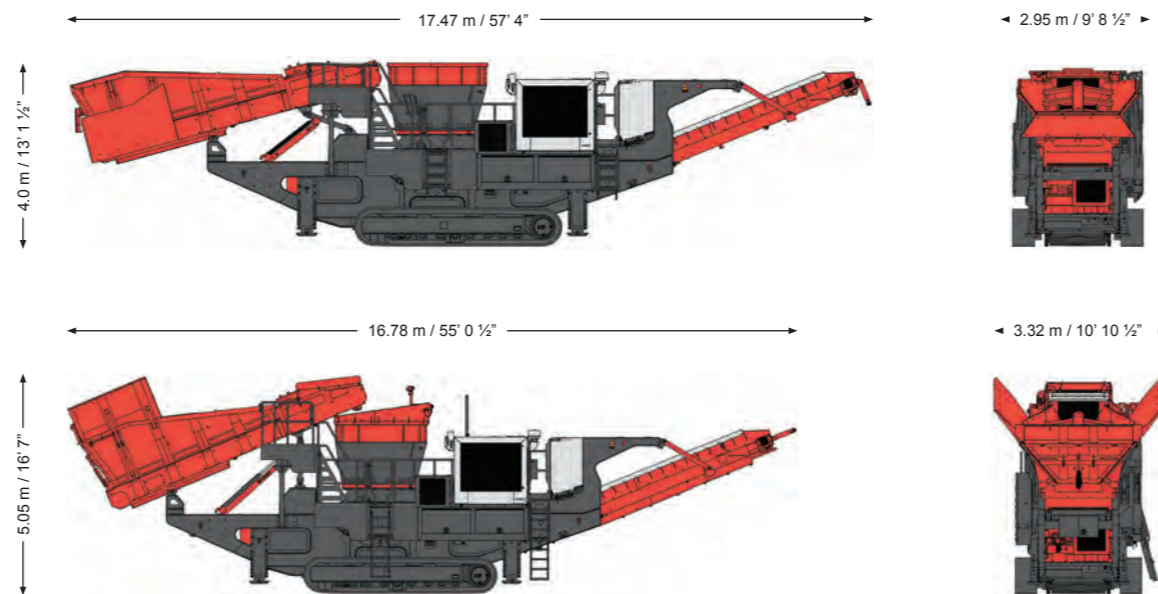
Single piston design for gap setting and over load protection. CSS can also be adjusted whilst crushing.

Technical specifications

	QS441
Crusher	
Type	Sandvik CS440
Speed	289 rpm to 305 rpm
Feed Opening	up to 450mm / 17 3/4"
CSS Range	25mm - 51mm / 1" - 2"
Drive	PT Tech 14" Wet Clutch with PTO
Drive Belts	10 SPC Single Belts

	QS441
Powerpack	
Engines	Stage 3A / Tier 3 Cat C13 Acert Stage 3B / Tier 4i Cat C13 Acert
Engine Power	328 kW / 440 hp
Diesel Tank Capacity	990 Litres / 262 US Gallon
Hydraulic Tank Capacity	990 Litres / 262 US Gallon

Note. All weights and dimensions are for standard units only



Standard weight 55,753 kg / 122,914 lbs



SANDVIK CONSTRUCTION MOBILE CRUSHERS AND SCREENS LTD
 HEARTH COTE ROAD, SWADLINCOTE, DERBYSHIRE, DE11 9DU, ENGLAND
 T: +44 (0) 1283 212121 F: +44 (0) 1283 818210 info.mobilecs@sandvik.com www.sandvikmobiles.com

The material in this brochure is of general application for information and guidance only, and no representation or warranty is made or given by the manufacturer that its products will be suitable for a customer's particular purpose and enquiry should always be made of the manufacturer to ensure such suitability. Whilst every effort has been made in the preparation of this document to ensure its accuracy, the manufacturer assumes no liability resulting from errors or omissions in this document, or from the use or interpretation of the information contained herein. The manufacturer reserves the right to make changes to the information in this brochure and the product design without reservation and without notification to users.

BB-332 ENG rev1 © Sandvik Construction 2013 SANDVIK is a registered trademark owned by Sandvik Intellectual Property AB in Sweden and other countries

QS441 Mobile Cone Crusher

E-motion

A revolution in mobile cone crushing



QS441 Mobile Cone Crusher

Engineering in motion

KEY SPECIFICATIONS

EQUIPMENT	Sandvik CS440 Gyratory cone
MAXIMUM FEED SIZE	450 mm / 17 ¾"
ENGINE	C13 Acert 328 kW / 440 hp
TRANSPORT DIMENSIONS	17.47m / 57' 4" (l) 2.95m / 9' 8 ½" (w) 4.0m / 13' 1 ½" (h)
WEIGHT	55,753 kg / 122,914 lbs

ULTIMATE THROUGHPUT

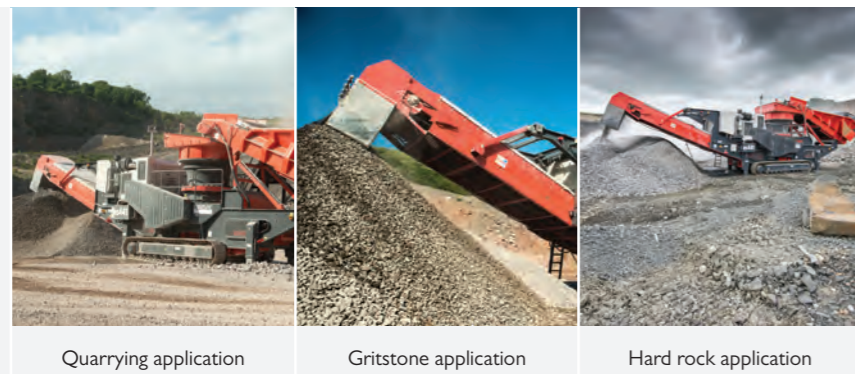
The QS441 features the world-leading CS440 gyratory cone crusher from Sandvik. Capable of accepting a feed size up to 90% larger than standard cones, it can achieve exceptional rates of throughput combined with high product quality. It is able to produce large reduction ratios with minimal fines production and is ideally suited for crusher run, ballast, drainage stone or material for a tertiary crushing plant.

The CS440 comes equipped with a hydroset CSS regulation system that provides overload protection, optimizes production and keeps track of liner wear. The unit is also fitted with an automatic level sensor above the crushing chamber, which controls the automated variable speed feed conveyor to ensure maximum production and reduction.

Powerful and robust, it is driven by a diesel engine with direct drive to ensure maximum power transfer and fuel efficiency. It features a number of innovative features for minimal operator intervention and uninterrupted productivity and comes with a choice of three concaves and different bush settings, offering customers one of the most productive and flexible cone crushers in the market today.

FEATURES INCLUDE:

- Emissions compliant 328 kW / 440 hp engine for powerful cost efficient performance
- Camera overseeing the crushing chamber allows the operator full visibility of the feed material entering the crushing chamber
- Capable of operating in the most hostile environments with a 50°C ambient temperature capability with just a change of lubrication oil
- Fully compliant with the latest Machinery Directives
- Designed for optimum fuel economy and low operating costs.



Suitable for a wide variety of applications.

Power Pack

- 328 kW (440 hp) emissions compliant engine
- Direct drive to ensure maximum power delivery
- Easy access for service and maintenance
- Ground level drainage points
- Large capacity diesel tank 990 litre / 262 US Gal

Cone

- Fitted with the proven CS440 Sandvik cone for strength and reliability
- Equipped with Hydroset CSS regulation system for optimum production & protection
- Pressurised cone prevents dust ingress into the cone internals
- Various bush settings available to optimize product gradation and capacity
- Variable crusher speed via the engine to manipulate product gradation
- World renowned Constant Liner Performance system for optimum wear life of the liners

Feeder

- Automated variable speed 1200mm / 47" wide feed conveyor to ensure maximum production, and reduction
- Bridge Coil (up and over) metal detector fitted to the feed conveyor providing optimum stability and controlled detection

Hopper

- Wear resistant liner plates fitted as standard
- Hydraulically raised and lowered for transport
- Improved level sensor control system for the feeder drive to ensure continuous uninterrupted crushing
- Hydraulic folding hopper extensions for increased hopper capacity and rear loading (optional)

Main Conveyor

- 1200 mm / 47" wide main conveyor with a discharge height of 3739 mm / 12'3 ¼"
- Dust suppression spray bars and canvas covers fitted as standard
- Head guards and underguards (optional)

Cooling fan

- Hydraulically driven cooling fan with auto reverse to back flush dust from radiator

Control system

- Highly efficient hydraulic and electric system provide ultimate system control
- A full colour PLC screen with a simple operator interface combined with a level sensor above the crushing chamber and load control system allows for a fully automated crushing process

Steel pipework

- Provides a safe and maintenance-free sealing solution, combined with better heat dissipation

Chassis

- Heavy duty fabricated chassis on a tracked frame
- Hydraulic legs for increased stability and servicing capabilities

Tracks

- 500 mm / 20" wide tracks driven by umbilical control / radio remote (optional)
- Proportional tracking for ultimate machine maneuverability



STANDARD FEATURES

Camera and level sensor to ensure continuous feed

Bridge coil metal detector for controlled detection

Four jacking legs for increased servicing capabilities

Easy access to the engine compartment

User friendly PLC control system with colour screen

MC chamber with extremely large feed opening